



Table of content

1. In page 1 you could find the meaning of MLRP.

2. In page 2 you will find the meaning and benefits of solar pannels.

3. Page 3 you learn about Agrovotais

4. on page 4 you learn about Nasa

5. Benefits is an advantage of profits gained from something

6. In page 6 you will find what climate change is and its benefits

7. In page 7 you will find the definition of sigma

8. In page 8 you will find a word-search its a puzzle consisting of a bunch of letters in a square with words you have to find.

MLRP.

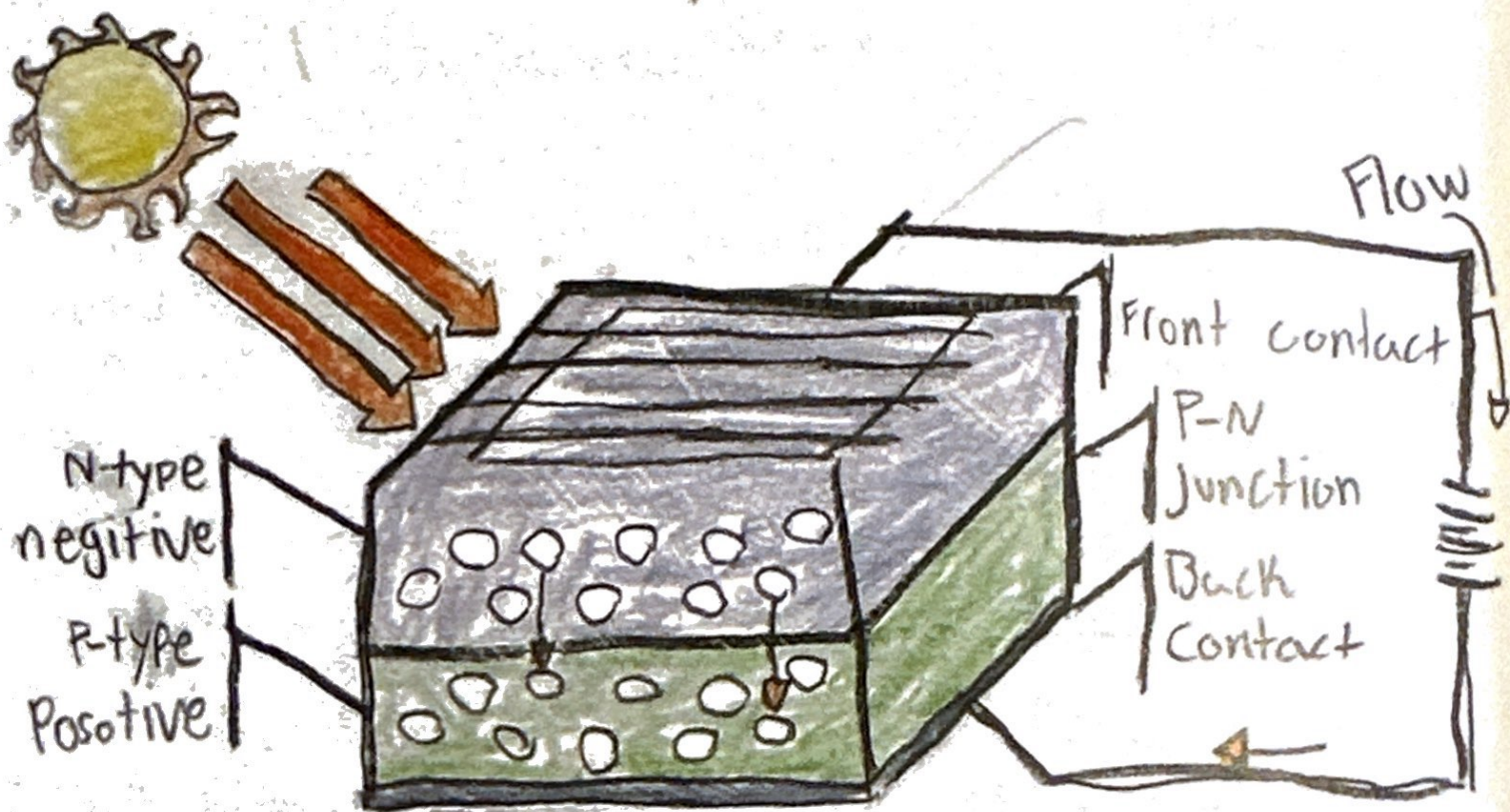
MLRP
Multibenefit
Loan
Repurposing
Program

MLRP Just Repays
the educational Loans
of health Professionals
who are working in
eligible healthcare
organizations



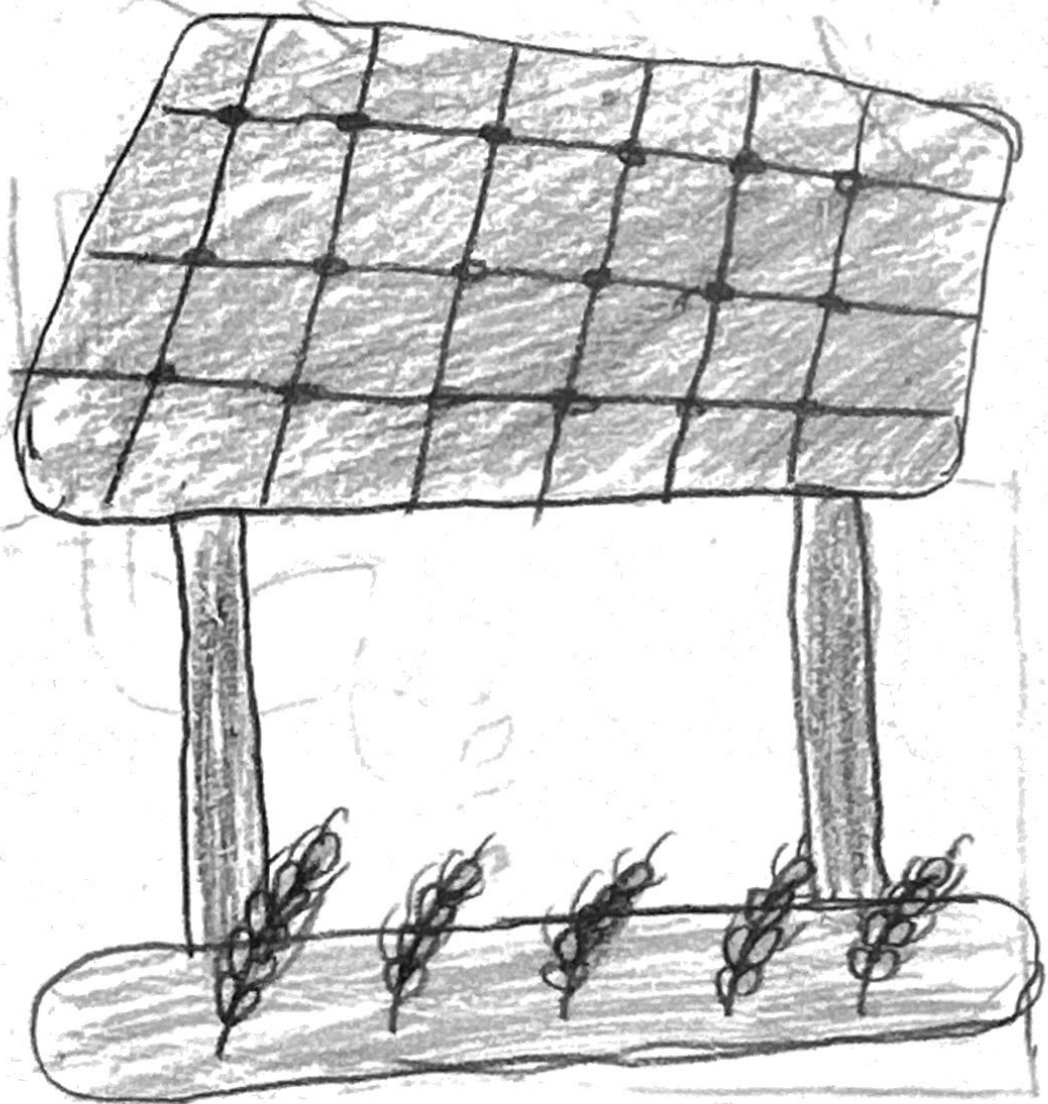
Solar pannels

Solar pannels are Just a way to get energy, The way it works When the sun shines into it the PV cells in the pannel. The energy creates electricity



Agrovotatics

Agrovotatics is the practice of using land for both agriculture and solar photovoltaic (PV) energy generation. And also its using the same area of land to obtain both solar energy and agriculture products

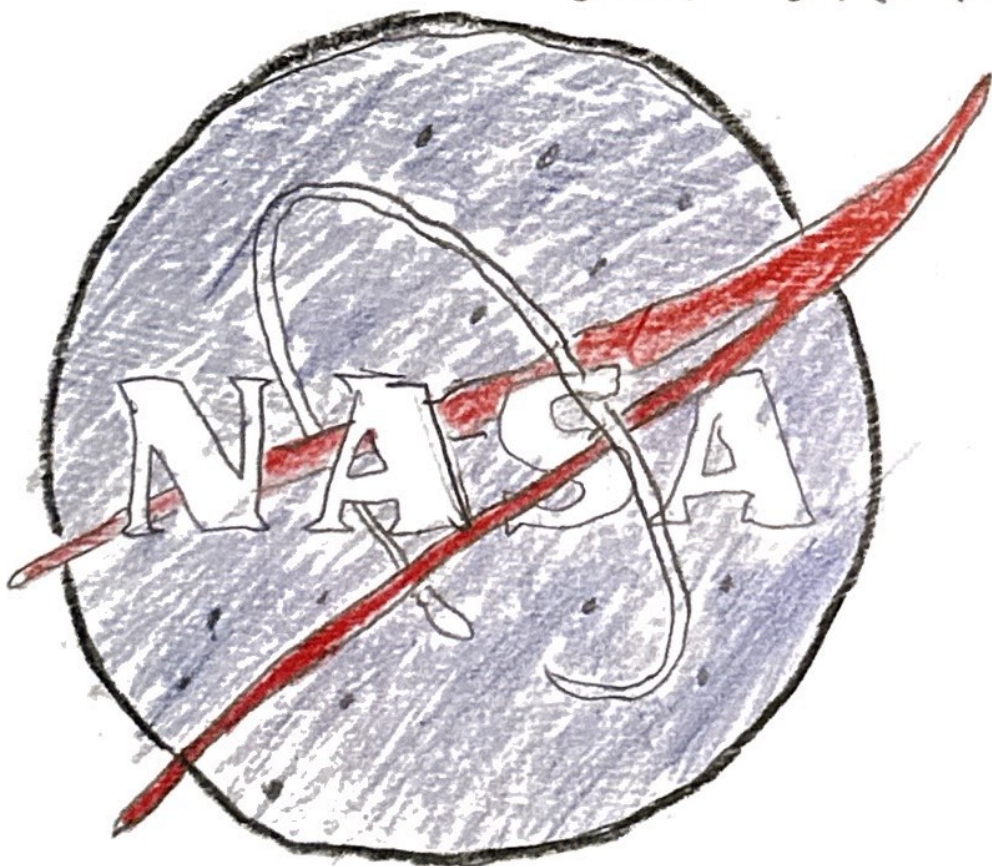


nasa

NASA

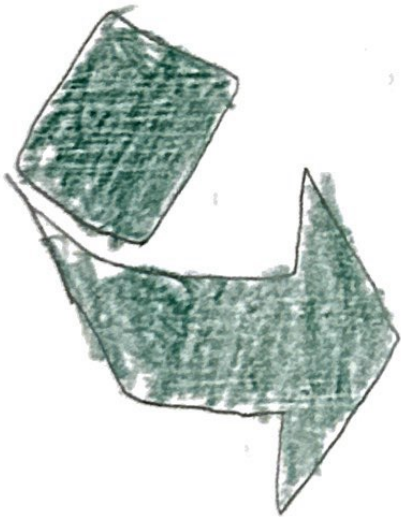
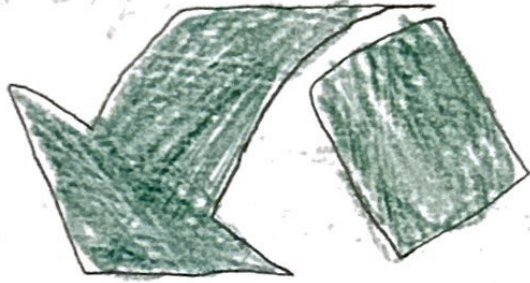
National
Aeronautics
and Space
Administration

nasa is a
independent agency
of the U.S. federal
government
Responsible for the
Civil Space Program



BENEFITS

An advantage or profit gained from something. They also refer to advantages or positive outcomes from a particular action, decision, or situation.



Climate Change

refers to long-term shifts in temperatures and weather patterns. The current rapid warming of the Earth's climate caused by human activity.



SGMA

SGMA = Sustainable Groundwater Management Act.

The law started in 2014 it was to control overdraft.

The water in California was not sanitary and overused and with California's climate it only gets worse.

Word Search

D L X C K A L B S A N N F F L
M Q L Q V G Y E N L R A L O S
S Z E J Q R R M I E E S V T H
C R O P S I A X D N O N N L B
V B K H M V D Z S P A A A Y E
I U N Y Y O I F H N L D N P V
X Z O S O T Z I T P W T G E R
B R K J T A A J W T A Y A K E
J V I M C I E Y M U M R B M T
E E L W X C Q B X L I Y E R A
T Y M N A S A J R K Z T H L W
M Y J P Z T A P P U O E T V I
L E G N A C R A Y L A G A T E
J S B E P F C W U W B B I F H
A K S W F Y W A D L P G J V Z

Arcangel
Daniel
Nasa
Solar

Agrivotaics
Crops
MLRP
Plants
Water

Adi
Areli
JPL
Panels
Sophia

2024 TULARE LAKE

PROJECT BASED LEARNING PROGRAM

ECO ENERGIZERS: TULARE LAKE YOUTH PHOTON FARM!



This summer the Allensworth Progressive Association (APA), in partnership with Socio-Environmental Education Network (SEEN), hosted the annual 2024 Tulare Lake Project-Based Learning (TL PBL) at Col. Allensworth State Historic Park. Throughout the months of June and July our students learned about multi-benefit land repurposing and agrivoltaics, exploring where photovoltaics and agriculture meet to power our way to a greener tomorrow! The TL PBL is a regional climate change education program for rural middle and high school youth living in the Tulare Lake region. The TL PBL introduces and educates our youth on the climate issues we face in the southern Central Valley and explores innovative mitigation and adaptation solutions, preparing them for the future.

For more information: infoallensworthpa.org

