



Multi-Benefit Land  
Repurposing Program

# Land Repurposing Solutions Seminar

*Welcome!*

# Seminar Purpose

---

Provide growers, land owners, and community members with:

- Practical information on land use options,
- Where and how options can be best implemented,
- Current funding sources, tools, and technical assistance,
- and other considerations for converting ag land to uses such as Solar, Temporary Fallowing, Recharge, No-/Low-Irrigated Crops, Grazing, and Habitat.

# Agenda

---

**3:00 - 3:25 PM** Welcome, Opening Comments, & MLRP Overview

## Track 1

## Track 2

**3:30 - 4:00 PM** Temporary Fallowing & Low/No Water Crops

Habitat & Open Space

**4:00 - 4:30 PM** Solar Farms (*Utility & Commercial Scale*)

Permanent Conservation

**4:30 - 5:00 PM** Recharge

Livestock Grazing

**5:00 - 5:15 PM** Next Steps and Closing Comments

An aerial photograph showing a vast agricultural landscape. A prominent feature is a long, straight canal or irrigation channel that runs diagonally across the frame. The canal is bordered by a wide, light-brown earthen embankment. On the left side of the canal, there are large, rectangular plots of land, some of which are covered with a white plastic mulch. The right side of the canal is dominated by dense, green rows of crops, likely citrus trees, planted in a grid pattern. In the background, more agricultural fields and a small cluster of buildings are visible under a clear sky. The overall scene depicts a well-organized and extensive irrigation system.

**What is the MLRP?**

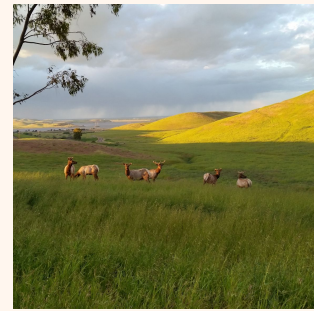
# Major agricultural regions in California are transitioning to sustainable groundwater use

- Over the next two decades, major agricultural regions in California will transition to sustainable groundwater use by 2040 or 2042 as mandated by the Sustainable Groundwater Management Act (SGMA)
- Sustainable management will help avoid land **subsidence**, lowering **groundwater** levels, **dust bowls**, and other undesirable results.

**SGMA + Droughts will lead to 10-20% reduction in irrigated farmland in the SJV by 2040\***



# Alternative path: multibenefit land repurposing

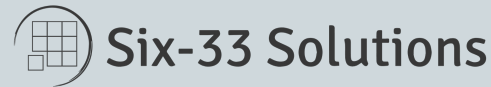


# What is the Tule Subbasin MLRP

---

A local collaborative effort that aims to support landowners, farmers, and communities with achieving groundwater sustainability by transitioning irrigated agriculture to alternative land uses, a practice known as land repurposing, that provides multiple benefits such as community, economic, and environmental wellbeing.

# Tule Subbasin MLRP Partners

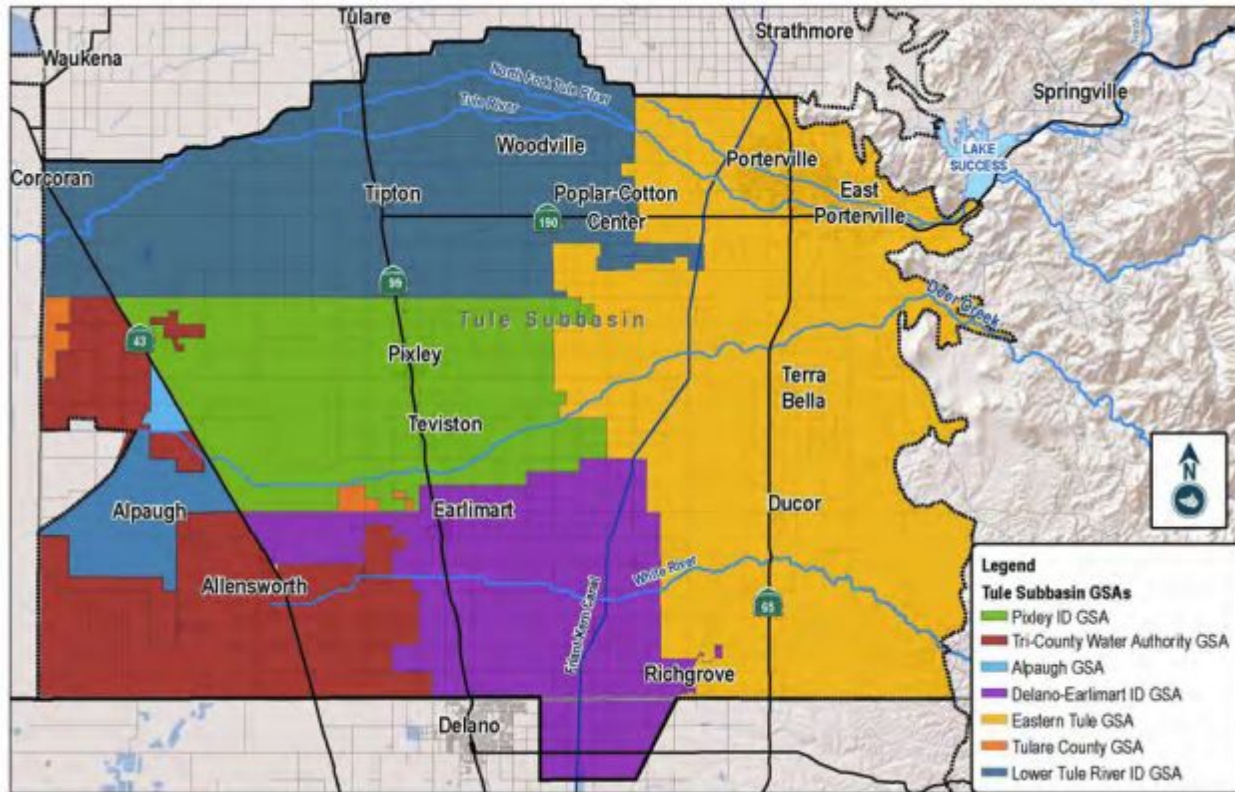


- Pixley Irrigation District Groundwater Sustainability Agency
- Eastern Tule Groundwater Sustainability Agency
- Tri-County WA Groundwater Sustainability Agency
- Tule Basin Land and Water Conservation Trust
- Self Help Enterprises

- Sequoia Riverlands Trust
- UC Merced
- SocioEnvironmental and Education Network
- Six33 Solutions
- Tulare Basin Watershed Network & Ag Innovations
- The Nature Conservancy
- California Audubon



# Where is the Tule Subbasin?



**FIGURE 1-2: TULE SUBBASIN GROUNDWATER SUSTAINABILITY AGENCIES**

# How can the MLRP help you?

- **Funding & Support:** Provides funding & support for growers and landowners who voluntarily transitioning irrigated crops to alternative land uses.
  - Approximately \$4 Million is available for small scale or pilot projects.
- **Tools & Resources:** Provide tools and resources to support GSA's, growers, and landowners with land repurposing efforts.
  - Maps, technical feasibility studies, and cost/benefit analysis
- **Local Plans:** Plans will help prioritize solutions and unlock funding

# GSA's Priorities within MLRP

- Connect MLRP with Groundwater Sustainability Plans
- Achieve groundwater sustainability with projects and actions that:
  - Reduce demand for groundwater.
  - Increase groundwater storage.
  - Manage land subsidence.
  - Improve and protect water quality.
- Aligning projects with the individual GSAs
- Work with your local GSA
- Participate in the development of the local MLRP plans.

# Project Application Process

- **Pre-Qualifications**
  - Be in a GSA within the Tule Subbasin
  - Project must be consistent with your Groundwater Sustainability Plan
  - Project must provide groundwater sustainability benefits that last at least 10 years
  - Project must provide at least one other community benefit (environmental, community, or economic benefit)
- **Project Application Timeline**
  - Monday, April 22 (3 week review period)
  - Tule-MLRP.org

# Questions and Answers

