

# Tule Subbasin Multibenefit Land Repurposing Program Fact Sheet



## Why do we need Multi-benefit Land Repurposing?

Increasingly frequent and intense droughts are adding to a long-term imbalance between water supply and demand in the San Joaquin Valley. Bringing groundwater basins into balance and agricultural production in line with water supplies will require significant acreage of irrigated farmland to be taken out of production in the coming decades. Local water agencies are wrestling with this challenge as they work to develop and implement the Groundwater Sustainability Plans.

## What is Multi-benefit Land Repurposing?

Multi-benefit land repurposing is the practice of transitioning irrigated land to new uses that conserve water and deliver benefits to communities and ecosystems. With public funding, growers can be compensated for voluntarily transitioning formerly irrigated farmland to new uses, such as habitat corridors, parks, groundwater recharge basins, and well-managed rangeland.

## What is the Tule Subbasin Multi-benefit Land Repurposing Program (MLRP)?

In 2021, the California Department of Conservation (DOC) created the MLRP program to fund groundwater sustainability plans and projects that repurpose irrigated agricultural land. The Tule Subbasin MLRP was submitted to the DOC by Pixley Irrigation District Groundwater Sustainability Agency (GSA), Eastern Tule GSA, and Tri-County Water Authority GSA, along with other local partners was awarded a \$10 million grant!

## Where is the Tule Subbasin?

The Tule Subbasin Featured in the map has several cities and communities within its boundaries. There are six GSA's within the Tule Subbasin.

## How does the Tule Subbasin MLRP work?

This project, intended to operate from 2023 to early 2026, is engaging with our farmers, landowners, community members, conservation

groups, academia and others to better understand what the Subbasin needs, to find common ground on alternative land-use solutions, and identify and develop projects to reduce water demand that generate multiple benefits.

Three projects have already been identified, yet approximately half the funding remains for new projects and pilots yet to be determined that will be generated by willing landowners, growers, communities and more. While only a few projects will likely be funded with this program, other project concepts will be integrated into Local and Subbasin-wide plans that will seek other funding sources.

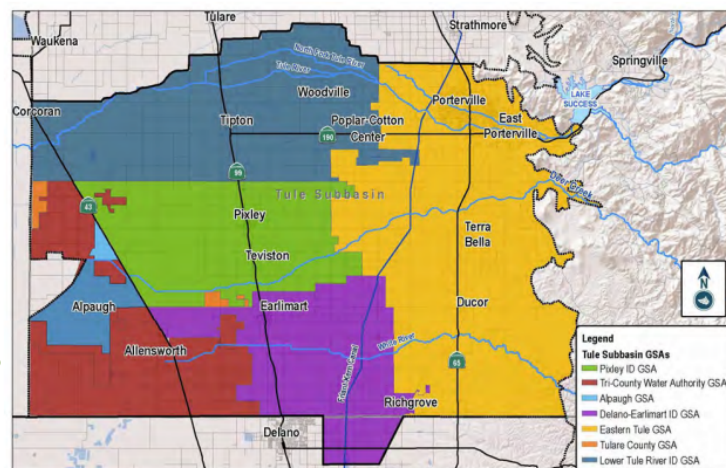


FIGURE 1-2: TULE SUBBASIN GROUNDWATER SUSTAINABILITY AGENCIES

# Tule Subbasin Multibenefit Land Repurposing Program

## Fact Sheet



### What are the Land Repurposing Options?

Examples of strategies and projects that may be funded by the Tule Subbasin MLRP include:

- Wildlife Habitat
- Groundwater Recharge
- Recreational Parks
- Less Water Intensive Ag
  - Including Dryland Crops and Grazing Land
- Low Impact Solar
- Tribal Land Uses & Cultural Practices



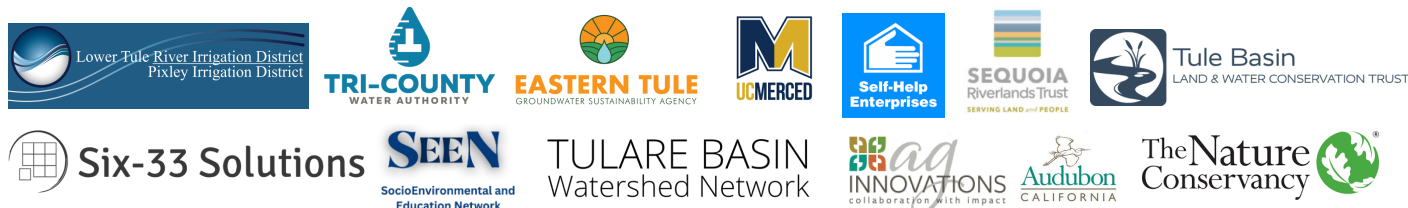
### Get Involved

Please join us to learn more about Tule Subbasin MLRP and share your ideas for projects that repurpose land to benefit everyone.



### Who are Tule Subbasin MLRP partners?

The Tule Subbasin MLRP is led by Pixley Irrigation District GSA, in partnership with the Eastern Tule GSA, Tri-County Water Authority GSA, and a range of other organizations listed below.



Sign-up for our mailing list here at [bit.ly/TuleMLRP](https://bit.ly/TuleMLRP)

For questions, input, or to get more information contact: [Guadalupe Garcia at guadalupe@aginnovations.org](mailto:Guadalupe Garcia at guadalupe@aginnovations.org)